

Holy Cross Ranger District
24747 US Hwy 24
P.O. Box 190
Minturn, CO 81645
(970) 827- 5715 - Voice
(970) 827-9343 - Fax



United States Department of Agriculture



HIKING

GORE CREEK TRAIL #2015

Length: 5.48 miles to Gore Lake (one way)
6.8 miles to Red Buffalo Pass (one way)

Difficulty: Moderate to More Difficult

Beginning Elevation: 8,711 ft.

Ending Elevation: 11,390 ft.

Elevation Gain: +2,755 ft.-76 ft. = +2,679 ft.
+3,107 ft.-71 ft. = +3,036 ft.

Trail Use: High

Open To: Hiking, Horseback

USGS Map(s): Vail East

Access from Vail: Take Exit 180 from I-70 for East Vail. If traveling eastbound, turn right at the bottom of off-ramp. If traveling westbound, turn left at the bottom of the off ramp. Continue east down Bighorn Road almost to the end, approximately 2.5 miles. The trailhead is on the left before you reach the Gore Creek campground. Parking is limited. Please park at the trailhead, not at the campground.

Trail Highlights: The first 4 miles of the trail climbs alongside Gore Creek. There are some short steep sections along the way. The trail winds through meadows and aspen groves which change to conifer stands as the elevation increases. At mile 4, the trail forks; straight ahead goes over Red Buffalo Pass to Summit County, the left fork goes to Gore Lake. From the fork, the trail climbs through spruce and fir forest into the alpine tundra to Gore Lake. The trail is steeper in this section.

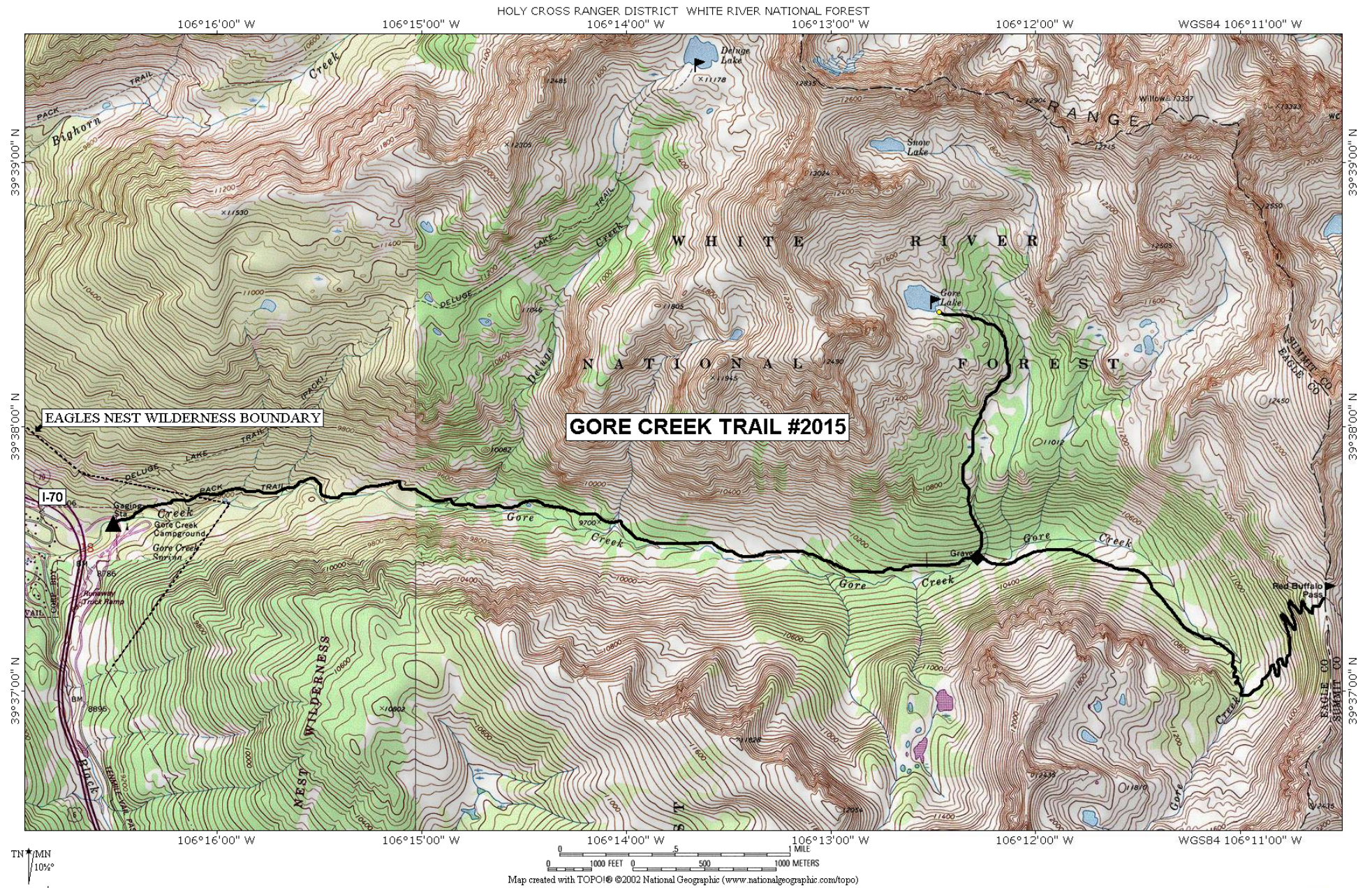
Attractions: A short hike along Gore Creek can provide pleasant picnic spots or great fishing opportunities. This trail is one of the most popular in the Eagle's Nest wilderness. Please help lessen the impact of humans in this area by packing out your trash and trash that has been left by others. If you plan on camping overnight at the lake, please use a backpacking stove - there is little wood left in the vicinity.

Important Information: Gore Creek is in the **Eagles Nest Wilderness**. Wilderness is for your use and enjoyment, but you have an obligation to leave it unimpaired for future generations. Please understand your responsibilities when visiting these special places. Leave them as you wish to find them:

- * Camping - camp at least 100 feet from streams, lakes, and trails
- * Dogs - must be leashed out of consideration for both other people and wildlife
- * Fire - campstoves are recommended and fires are prohibited at and above timberline
- * Group size - limit group sizes to 15 people
- * Sanitation - bury human waste 100 feet from water and 6 inches in the soil

PACK IT IN - PACK IT OUT!! LEAVE NO TRACE!!

This map is intended for use as a general guide only, not for actual land navigation. The White River National Forest strongly suggests purchasing a topographic map and compass prior to your hiking trip.



TN 104°

